



Hertfordshire and
West Essex Integrated
Care System



Primary Care Advanced Practitioners Network

Tuesday 21st January 2025

Working together
for a healthier future



Purpose of an Advanced Practice Network

A peer support group for all trainee and aspiring and experienced Advanced Practitioners working in General Practice.

- The aim is to share good practice, help and support each other in working across the 4 pillars of advanced practice and the highs and lows of working in an advanced role in primary care.
- The network can be whatever you want it to be. It is your group and therefore needs to be led by its members; you.
- Quarterly virtual meetings on Microsoft Teams and facilitated by the Training Hub but led by members.

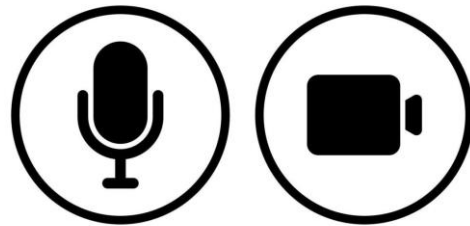


Hertfordshire and
West Essex Integrated
Care System



Peer support suggestions

- Journal club
- Topic presentations
- Sharing of innervations and quality improvement ideas
- and more!



The network can be whatever you want it to be

Please add your thoughts in the chat?



Hertfordshire and
West Essex Integrated
Care System



Responses on team chat which we explored and discussed

- Discuss new guidelines e.g. asthma
- Discuss and share best practice
- Supporting other APC's / Having a professional presence in local /national policy
- Group working and research
- Share quality improvement
- Sharing of courses and resources which are relevant to primary care. *(For example, I would like to learn advanced wound care for home visits)*
- New ideas to create /amend protocols
- Clinical Q&A - 10/15mins per session
- ANP Roles and guidelines and limitations Other roles are more extensive
- Mentoring
- Could we use a WhatsApp group for quick questions and sharing info?



Hertfordshire and
West Essex Integrated
Care System



The Multi-professional framework for advanced clinical practice

The Multi-professional framework for advanced clinical practice in England published by HEE in 2017 stipulates **38 core capabilities extending across the four pillars** of advanced practice that advanced practitioners are required to evidence.

A master's-level educational qualification is required to ensure those working at the level of advanced practice have been trained and educated to achieve and demonstrate these capabilities



Supporting the 4 Pillars of Advanced Practice in Primary Care

Balance

General practice example:

- Clinical Practice – 80%
- Education/Facilitating Learning – 10%
- Leadership & Management – 5%
- Research – 5%

Plus, time for Clinical Supervision



Journal club – what is it?

Background: A journal club is a forum to debate and review clinical practice using a number of models to gauge the strength of evidence associated with the clinical practice. A large body of evidence supports the importance of journal clubs as a method to improve patient outcome by enhancing the implementation of evidence-based practice and professional development in the clinical setting.



Hertfordshire and
West Essex Integrated
Care System



Eight suggestions on how to run a journal club

1. The members of the club should on the whole have shared or complementary interests.
2. Have at least one designated skilled leader who regularly participates in the club.
3. Keep a record of discussion and attendance.
4. Ensure that the meetings start and end on time and members commit to attend.
5. Discuss one paper from a peer-reviewed journal; develop a theme each time; occasionally include books of interest.
6. Split presentation and discussion times 50/50.
7. Try to choose papers that you think may influence clinical practice and discuss why.
8. Disseminate the chosen articles in advance, with questions that might be asked.

(Adapted from: [Journal Clubs: 2. Why and how to run them and how to publish them | BMJ Evidence-Based Medicine](#))

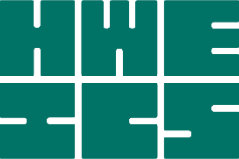
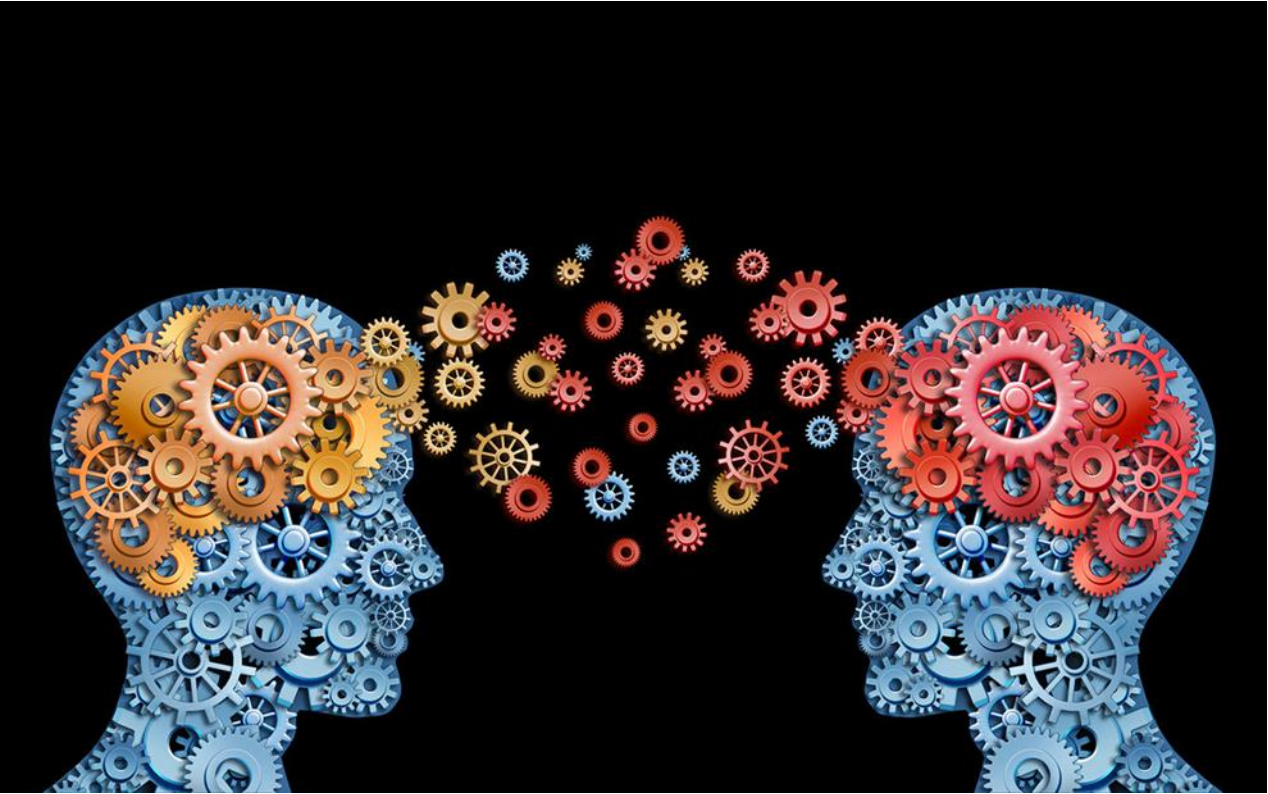


Hertfordshire and
West Essex Integrated
Care System



Sharing of innovations and quality improvement ideas?

Knowledge sharing promotes innovation!



Hertfordshire and
West Essex Integrated
Care System



Primary Care Advanced Practice Network

Next Meeting date: Wednesday 30th April 2025 – 12.30 to 13.30

*Volunteer contributors required for Journal club and sharing of innovations
to allow meeting to go ahead!*



Hertfordshire and
West Essex Integrated
Care System

